

EXPLORATORY TRIALS RATIONALE & PURPOSE

The targeted exploratory trials programme helps us understand Timaru more deeply, trigger a positive mood for change, ensure our design brief is relevant and will begin to introduce some of the bigger ideas.



Dogs in the centre

Purpose: Exploring whether having more dog friendly spaces and/or times within the central city could increase the number and diversity of people and time spent in the central city. Working with supportive businesses to evaluate the impact on business as well.

Bite-sized recreation

Purpose: Small recreational offerings peppered around the centre, integrating moments of sport & play into everyday life in the city. Exploring whether Caroline Bay and the outskirts are where recreation belongs - and/or if the city can become more varied and vibrant with such small interventions.

Port/Seaside activation

Purpose: Improving access and amenity at the closest water's edge from the central city, experimenting with a location that could be developed into a future public space, if there's public appetite for it.



Codebreakers

Purpose: Encouraging Timaruvians to explore side streets and connections/locations that might be unfamiliar to them. Learning about people's preferred paths and working to break ingrained mobility habits.

Bay hill activations

Purpose: Testing whether a wider range of things to do - or other changes - would increase the usage at Bay Hill, and whether and how we can increase the proportion of people connecting between Bay Hill and the rest of the city to the south - to inform a potential targeted trial for the Bay Hill / Sefton Street intersection. .

Active transport hire

Purpose: Piloting one or more options for readily available active transport designed to increase the distances that people will travel in the city. Could additional transport options encourage more exploration, and better connect the city, Caroline Bay and Port? Potential to include two short trials, one targeting tourists/cruise ships and one locals.



CityTown conversations

Purpose: Quick, easy, topical interactions sprinkled across the city that create 'little and often' moments for anyone to talk about the future of Timaru CityTown. This can be an umbrella category to enable fast action as 'quick win' opportunities present themselves. First example utilises the poster bollards located at The Bay Hill, Strathallan corner and Heritage Place.

Bite-sized recreation

Purpose: Small recreational offerings peppered around the centre, integrating moments of sport & play into everyday life in the city. Exploring whether Caroline Bay and the outskirts are where recreation belongs - and/or if the city can become more varied and vibrant with such small interventions.

Youth space

Purpose: Increasing the diversity of offerings in the central city with a focus on youth. Can we encourage more young people to dwell in the city in an ongoing way, and/or otherwise create more central city points of difference? Potential to include testing temporary uses of vacant shops.



Royal Arcade uses - Enabling Toolkit

Purpose: Enabling usage of the Royal Arcade through developing clearer guidelines and processes. Addressing current sentiment that it's too hard or unclear.

Vacancies (rates rebate) - Enabling Toolkit

Purpose: Exploring whether a rates incentive (possibly in the form of a grant) could be used to enable temporary occupation and use of vacancies in the central city. Increasing the appeal of the central city.

Rural in the centre

Purpose: Discovering ways to connect central Timaru with the surrounding countryside, and having reminders in the city of the proximity and importance of the agricultural prominence in South Canterbury. Exploring this rural connection as an authentic point of difference for Timaru CityTown



Soft trials (Policies & Bylaws) - Enabling Toolkit

Purpose: Exploring the regulatory framework to see if any policy and bylaw changes/pilots could be used to help encourage developments, activities and behaviours in accordance with the CityTown desired outcomes and key moves.

Visible art & culture

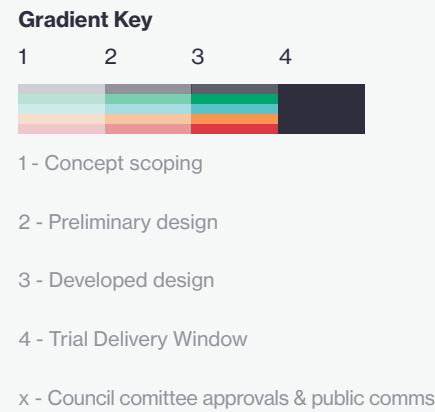
Purpose: Highlighting and making people more aware of the existing arts and culture in Timaru that is often a bit hidden from view – and encouraging and attracting new arts and cultural initiatives by making existing ones more visible and celebrated. Likely to combine an arts event with late-night shopping, and also make temporary use of vacant shops.

Summer music/buskers

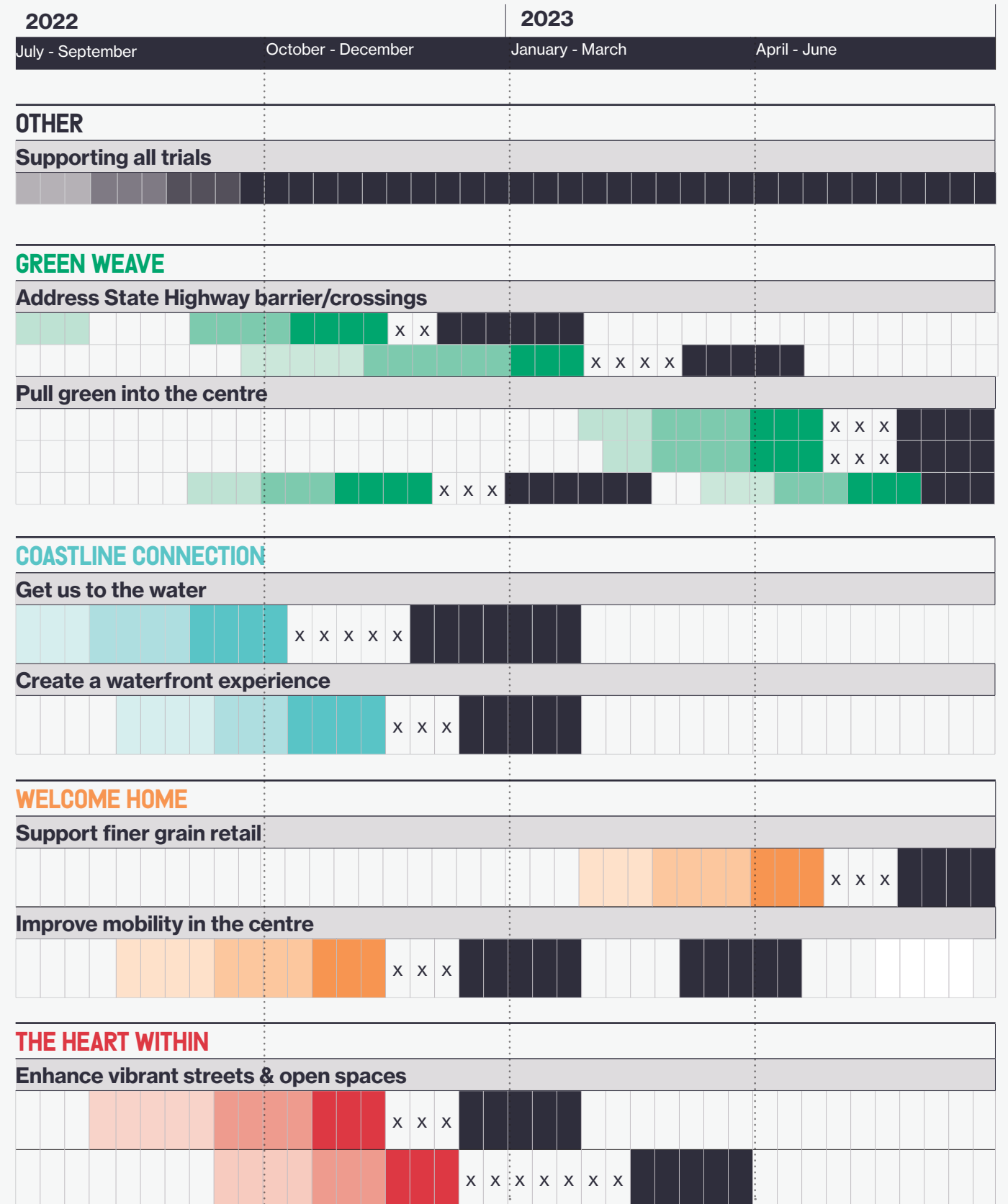
Purpose: The earlier Strathallan Corner trial yielded lots of requests for more music and busking in central Timaru. Exploring ways to achieve this – and glean the positive impacts of live music in the city – without causing too much disruption.

TARGETED TRIALS PROGRAMME

Not all of these projects will proceed through to delivery. They will first be tested through scoping and early design with input from the CityTown Project Team, to inform whether to proceed with delivery of the trial. Through this process the trial programme will become more refined at each decision point.

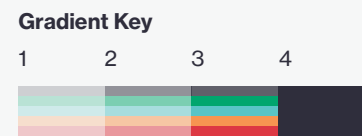


OTHER					
Supporting all trials					
Kit of parts	0	●	●	●	●
GREEN WEAVE					
Address State Highway barrier/crossings					
SH1 Theodosia St /Arthur St	1		●		
SH78 Sefton St/Bay Hill Inter	2		●		●
Pull green into the centre					
Strathallan Street Greenway	3	●			●
Station Street Greenway	4	●			●
George Street Greenway	5	●			●
COASTLINE CONNECTION					
Get us to the water					
Port Loop Road shared path	6	●	●		
Create a waterfront experience					
Marine Parade Promenade	7	●			
WELCOME HOME					
Support finer grain retail					
Pedestrian-friendly laneways	8	●		●	
Improve mobility in the centre					
Pedestrian focused Stafford Street trials	9				●
THE HEART WITHIN					
Enhance vibrant streets & open spaces					
Station Street - one way trial and street activation	10	●		●	
Pedestrianise Bay Hill & Street activation	11	●		●	



TARGETED TRIALS PROGRAMME

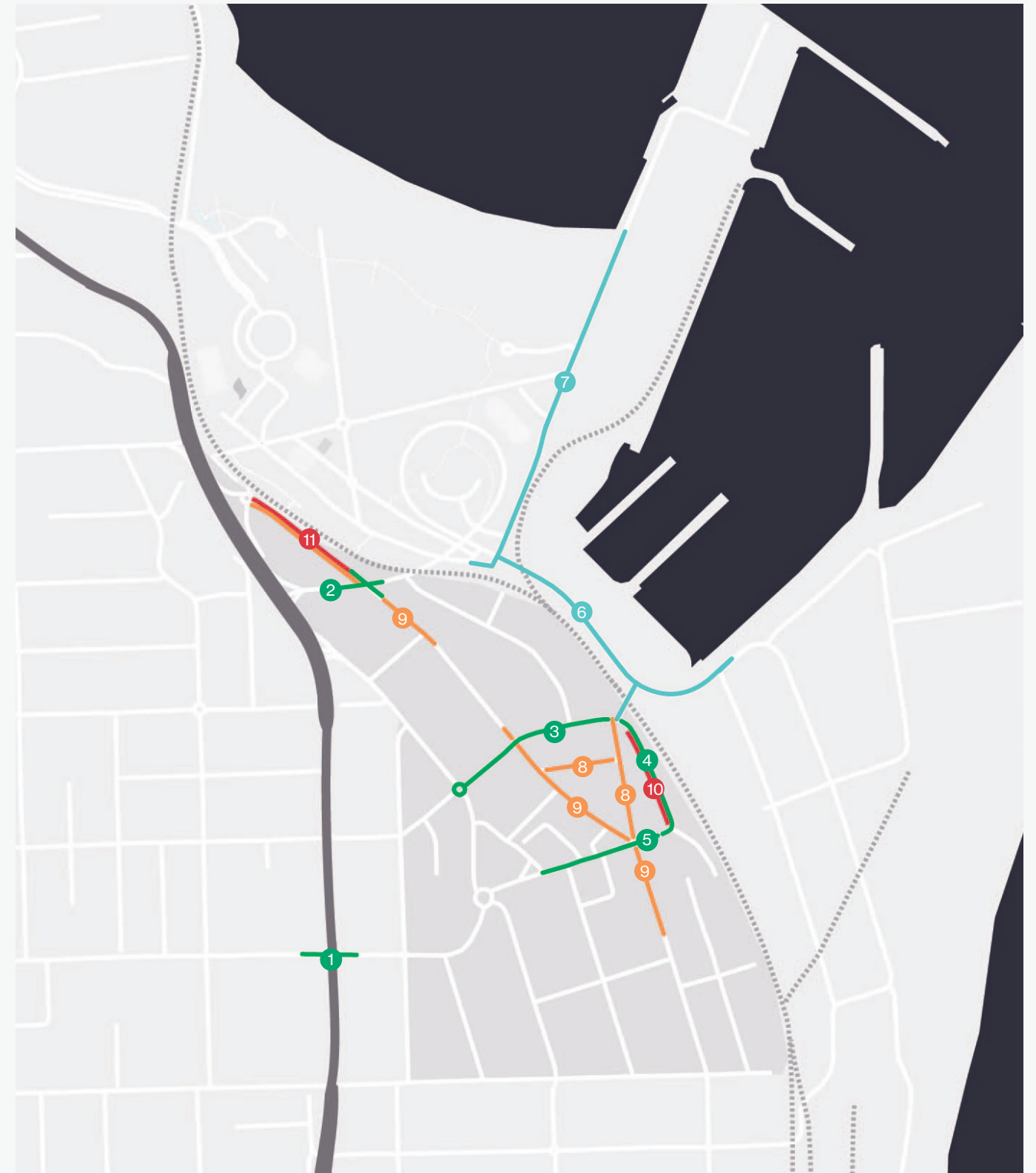
Not all of these projects will proceed through to delivery. They will first be tested through scoping and early design with input from the CityTown Project Team, to inform whether to proceed with delivery of the trial. Through this process the trial programme will become more refined at each decision point.



- 1 - Concept scoping
- 2 - Preliminary design
- 3 - Developed design
- 4 - Trial Delivery Window
- x - Council committee approvals & public comms

Number on map
Overlap with exploratory trials
Potentially Streets for people funded
Event street activation
Tactical intervention

OTHER					
Supporting all trials					
Kit of parts	0	●	●	●	●
GREEN WEAVE					
Address State Highway barrier/crossings					
SH1 Theodosia St /Arthur St	1		●		
SH78 Sefton St/Bay Hill Inter	2				●
Pull green into the centre					
Strathallan Street Greenway	3	●			●
Station Street Greenway	4	●			●
George Street Greenway	5	●			●
COASTLINE CONNECTION					
Get us to the water					
Port Loop Road shared path	6	●	●		
Create a waterfront experience					
Marine Parade Promenade	7	●			
WELCOME HOME					
Support finer grain retail					
Pedestrian-friendly laneways	8	●		●	
Improve mobility in the centre					
Stafford Street traffic calming trials	9				●
THE HEART WITHIN					
Enhance vibrant streets & open spaces					
Station Street - one way trial and street activation	10	●		●	
Pedestrianise Bay Hill & Street activation	11	●		●	



TARGETED TRIALS RATIONALE & PURPOSE

The targeted trials programme involves testing specific scenarios within the road corridor, looking at options for road space reallocation and the balance between space for vehicles and pedestrians to achieve the Outcomes and Key Moves set out in the Strategic Framework.

Green Weave

SH1 Theodosia Street /Arthur Street intersection

Purpose: Investigating safe and convenient ways for pedestrians and cyclists to cross State Highway One and continue their journey into town, diversifying travel choices for existing and future residents, workers and students. As part of the Waka Kotahi 'Streets for People' application, the trial will investigate severance issues through temporary interventions that reduce vehicle turning movements.

SH78 Sefton Street East/ The Bay Hill/ Stafford Street intersection

Purpose: Investigating safe and convenient ways for pedestrians and cyclists to cross the Port Loop Road (SH78) and continue their journey into town from Bay Hill. The trial will look at reducing crossing distances for walking and cycling at the intersection, and reducing turning movements out of Stafford Street and The Bay Hill.

People friendly Strathallan Street/Church Street 'Future Greenway' Trial

Purpose: Exploring people's perceptions and experience of Strathallan Street as a future greenway—investigating a temporary continuous cycling and walking route that connects the city to the original shoreline via Strathallan bridge, and surrounding residential areas via Church Street overbridge.

People friendly Station Street 'Future Greenway' Trial

Purpose: Exploring people's perceptions and experience of Station Street as a future greenway – with trial spaces in the street for bike parking, alternative parking options, sheltered seating and gathering space, alongside wayfinding to maintain continuity of walking and cycling routes and connect the city to the original shoreline.

People friendly George Street 'Future Greenway' Trial

Purpose: Exploring people's perceptions and experience of George Street as a greenway – linking Heritage Place to the historic shoreline. Includes trial spaces in the street to prioritise pedestrians and increase public space. May be explored in two parts, with part one focused on George Street/Heritage Place and the intersection with Stafford Street (in conjunction with Stafford Street trials).

Coastline Connection

Port Loop Road shared path

Purpose: Investigating safe and convenient ways for pedestrians, runners, cyclists, scooters to move between Caroline Bay/Port/ coastal trails and the city centre via the original shoreline and Strathallan footbridge. As part of the Waka Kotahi 'Streets for People' application, the trial will investigate whether a wider shared path and wayfinding can increase resident and visitor participation in active travel modes, increase visits to the city, and influence parking use on the periphery.

Marine Parade promenade

Purpose: Investigating safe and convenient ways for pedestrians and cyclists to move between Caroline Bay/Port and city centre,

the trial will test the space available for walking, cycling and parking, preferred access points to the beach and Bay, and perceptions about alternative travel modes into the city. Coupled with exploratory mobility trials and seaside activations.

Welcome Home

Pedestrian friendly laneways trial - Beswick St and Cains Terrace

Purpose: Utilising existing laneways to encourage use of mid-block walking routes, coupled with wayfinding from offstreet carparks. Could involve short duration 'shared space' trials to improve the amenity of pedestrian environments and increase footfall to support businesses. Developing learnings from Codebreakers and other movement based exploratory trials.

Stafford Street traffic calming trials

Purpose: Considering ways of reinforcing a slow speed environment and calming traffic to assist with pedestrian safety and reduced accidents. Could be investigated in conjunction with intersection trials at north (BayHill) and south (George Street) ends of Stafford street with 'threshold' trials to prioritise pedestrians and reinforce character precincts. Study business owner perceptions and parking options for mobility impaired users.

The Heart Within

Station Street One Way Trial and street activations

Purpose: Trialing a temporary one-way option for Station Street coupled with street activation (e.g. repeatable one day event) to learn about traffic flow/ circulation, public transport usage, increased public open space potential, and walking and cycling routes from Strathallan footbridge into the city. Will coincide with exploratory trials that consider preferences for mobility, and learnings could inform a subsequent Station Street Future Greenway Trial.

Pedestrianise Bay Hill trial and street activations

Purpose: Trialing a temporary one-way OR shared space option for Bay Hill coupled with street activation (repeatable one day event) to learn about traffic flow/ circulation, and available urban spaces for people to dwell in the central city. Will provide a base for exploratory trials that consider preferences for urban activities. Opportunities may be explored in conjunction with the Sefton Street East/ Stafford Street Intersection Trial to better understand traffic flow.

ENABLING TOOLKIT- 'Kit of Parts'

Purpose: The Kit of Parts is an enabling resource. It helps increase the efficiency of other trials by identifying a suite of pre-selected temporary elements that can be used for tactical interventions. The guidelines include an inventory of local suppliers, a design guide for assembly and application, and prototyping options. Short duration trials may only require simple, low cost devices that can be easily moved, while longer duration trials may require more robust/ fixed materials. The Kit of Parts can be used for wayfinding and changing road space for walking and cycling, or testing and activating spaces in new ways. It is recognisable and can be customised.